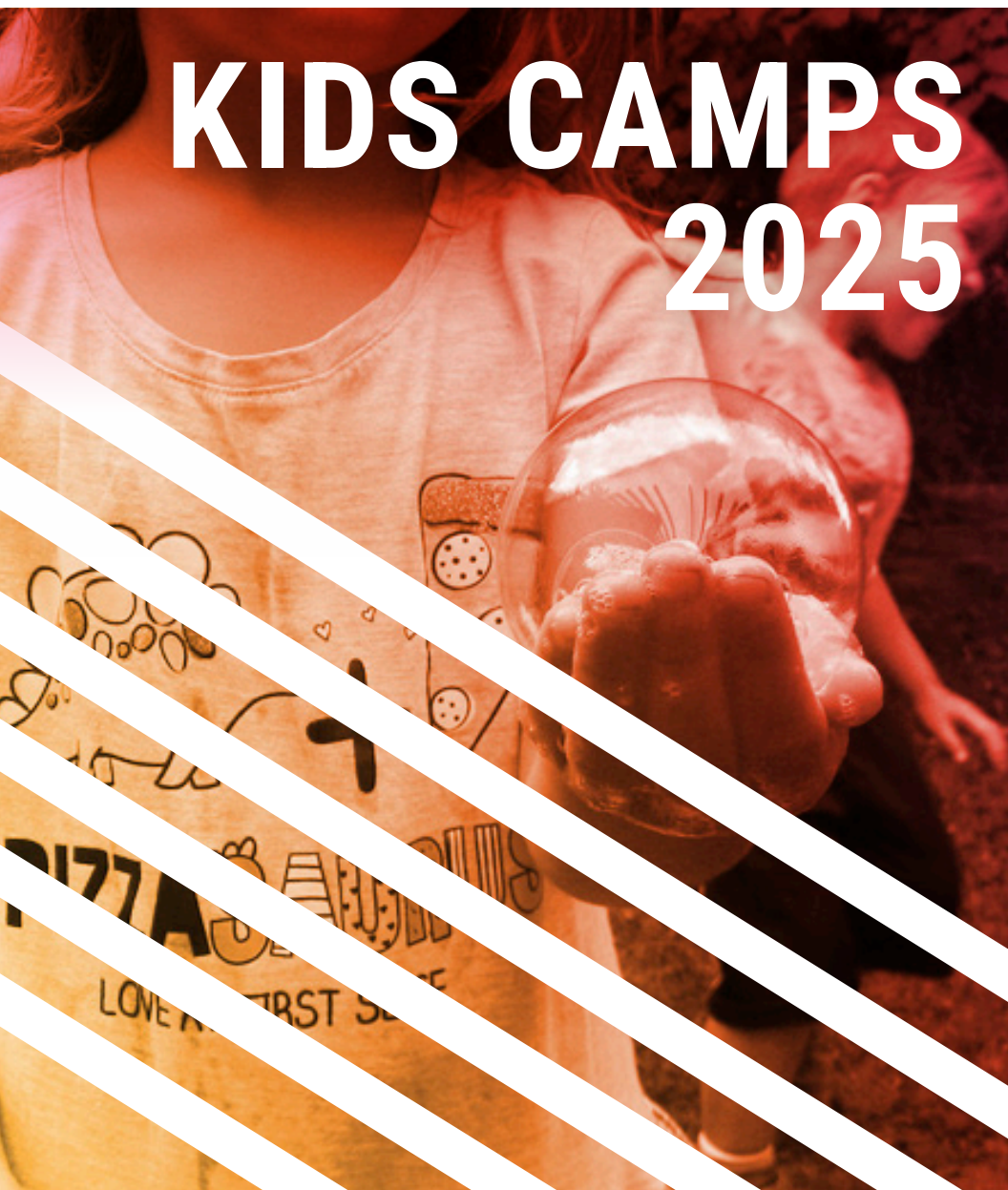


CONNECTING TO AND CELEBRATING A
RICHER LIFE THROUGH THE ARTS



KIDS CAMPS 2025



ABOUT NEILSON PARK CREATIVE CENTRE

NPCC was established in 1992 to provide a permanent home for Resident Groups, artists, creators, makers, supporters - wherever within that span individuals feel most at home. With four dedicated studio spaces, two galleries and administrative/support spaces, NPCC continues to respond to the needs of its members and supporters on the western edge of Toronto.

Vision: Connecting to and celebrating a richer life through the arts.

Mission: To serve as an inclusive arts hub that meets the creative needs of the community by facilitating artistic expression through education, exhibitions and events.



TABLE OF CONTENTS

Registration information.....	3
Camp Outline.....	4
Winter 2025 P.A. Days	6
Spring 2025 P.A. Days	8
Children's March Break Camp	9
Summer Camp 2025	10
Family Art Sessions	21
Adult Classes	21
Adult Workshops.....	22
Index.....	24

The NPCC Summer Camps catalogue was created in collaboration with co-op placement students from Humber College Child and Youth Care programs. Students worked on aligning art projects to children's age specific developmental milestones in sensory, fine motor, cognitive and social skills categories. By maintaining an 'art first' priority and a dedication to age specific interests and abilities, we hope your children will continue to grow, flourish and love art as much as we do at Neilson Park Creative Centre. Welcome to another fun-filled season of camps!

REGISTRATION INFORMATION

Join our community of artists, makers, and creators, who make Neilson Park Creative Centre a special place to learn and share an appreciation of the arts.

Register online, by phone, or in person. Registration is complete once registrant information and payment have been received and processed. Registration is on a first-come, first-served basis and is subject to availability. Individuals may be placed on the waitlist if a program is at full capacity. NPCC does not permit the auditing of programs.

Registration Dates:

Winter Camps: Available Now!

Summer Camp: December 20, 2024

Payment is due in full upon registration. We accept credit, debit, cheque and cash. NSF cheques are subject to a \$25 administration fee.

Cancellation: NPCC reserves the right to cancel or reschedule programs. In the event of a cancellation, a full refund will be issued. If a registrant can no longer participate due to rescheduling, a full refund will be issued. In the event of inclement weather, emergency or natural disaster, registrants should visit our website to confirm session facilitation. Every effort will be made to make-up a cancelled session; however, no refunds will be issued.

Withdrawals from programs must be made at least 14 days before the start date. A refund less \$25 administration fee will be issued upon receiving notice of withdrawal by email to: info@neilsonparkcreativecentre.com (charged per course, per registrant).

Transfers between programs are subject to availability. Request for transfers must be made at least 14 days before the start date. A \$25 administration fee will be charged. Registration is not transferable among individuals.

Instruction: Program capacity is based on studio space, the age of participants, equipment availability, and curriculum suitability. Program instructors are subject to change without notice. To learn more about our artist instructors and their work, visit our website.

Materials: All materials are included in the price of each week of camp.

In the Studio: NPCC is a scent-free environment. Registrants are not to wear colognes or perfumes or use solvents or solvent-based products. Registrants are to work safely and contribute to maintaining a clean learning environment.

Inclusion and Support: NPCC is committed to providing a safe, inclusive, and positive environment. By participating in Neilson Park Creative Centre programs, you are agreeing to adhere to our Code of Conduct. Visit our website to learn more.

Feedback: Registrant feedback is essential to both the teaching and learning experience at NPCC. We ask that all registrants complete our evaluation form, available online or in print at the office.

CAMP OUTLINE

SCHEDULE:

Each camper will participate in visual art activities, as well as recreational activities each day, in our indoor and outdoor spaces! Our camps are facilitated from 9:00 a.m. - 4:00 p.m., unless otherwise specified.

Extended care is available for an additional fee. Below is what a typical camp day looks like here at NPCC:

7:30 a.m. - 9:00 a.m.	Extended Care (AM)*
8:45 a.m. - 9:00 a.m.	Arrival
9:00 a.m. - 10:00 a.m.	Arts activity led by a professional arts educator
10:00 a.m. - 10:30 a.m.	Snack
10:30 a.m. - 12:00 p.m.	Arts activity led by a professional arts educator
12:00 p.m. - 1:00 p.m.	Lunch/outdoor play time
1:00 p.m. - 2:00 p.m.	Arts activity led by a professional arts educator
2:00 p.m. - 2:30 p.m.	Snack
2:30 p.m. - 3:30 p.m.	Arts activity led by a professional arts educator
3:30 p.m. - 3:45 p.m.	Group games/activities
3:45 p.m. - 4:00 p.m.	Dismissal
4:00 p.m. - 5:30 p.m.	Extended Care (PM)*

*Available for an additional fee

WHAT TO BRING:

Camper should wear comfortable clothes that can get messy! We suggest packing a change of clothes and/or a smock, just in case. Campers should bring a reusable water bottle, closed-toed shoes, and nut-free snacks and lunch. If the weather permits, we may take advantage of the neighbouring playground during the day, so please dress appropriately for outdoor play. Lunches should be ready to eat, as there is no access to kitchen appliances. Campers are encouraged not to bring personal toys as we have lots of supplies on hand. Cell phones are to be safely stowed away and only used for emergencies. Please note that NPCC is not responsible for lost, stolen, or damaged items.

HEALTH AND SAFETY:

All campers must have a completed Health and Dismissal form, our primary means of collecting information about each camper's health and safety, prior to the first day of camp. This form is available on our website or in person. Campers must be signed in every morning and signed out every afternoon by a parent/guardian listed on the Health and Dismissal form. Photo identification will be requested during each sign-out, for your child's safety. Parents/guardians must review any medication with the Program Coordinator prior to the first day of camp. If a camper becomes ill, the primary parent/guardian will be notified. If the primary parent/guardian is not available, the emergency contact will be reached.

STAFF TRAINING:

Camp staff members include the Program Coordinator, camp counsellors, professional arts instructors, and volunteers. Staff participate in comprehensive preparation prior to the start of camp that includes Standard First Aid, AODA, Health and Safety, HIGH FIVE: Principles of Healthy Child Development, and inclusion and support training.

CODE OF CONDUCT:

NPCC is committed to providing a safe, inclusive, and positive environment. By participating in Neilson Park Creative Centre programs, you are agreeing to adhere to our Code of Conduct. Visit our website to learn more. Camp staff will discuss camp rules and expectations on the first day of camp. Failure to comply with the Code of Conduct may lead to dismissal from camp.

For more information, please visit our website at www.neilsonparkcreativecentre.com

FIELD TRIPS & BIRTHDAY PARTIES at NPCC!

Our packages include professional art instruction, art supplies & an art studio!

Email or call us to learn more!



www.neilsonparkcreativecentre.com
416-622-5294 | julia@neilsonparkcreativecentre.com
56 Neilson Drive, Toronto, ON M9C 1V7

WINTER 2025 P.A. DAYS

WINTER P.A. DAY CAMP 1: GOURMET ART

FRIDAY, JANUARY 17, 2025

GOURMET ART – PERSONALITY PIZZA

W25CPA1A
Friday, January 17
9:00 a.m. to 4:00 p.m.
\$85.00 (No HST)

Location: At Centre
Sessions: 1 Friday
Instructor: Liha Ahmed
Level: Ages 5 - 7

GOURMET ART – DONUT EAT THE MICRO CHIPS

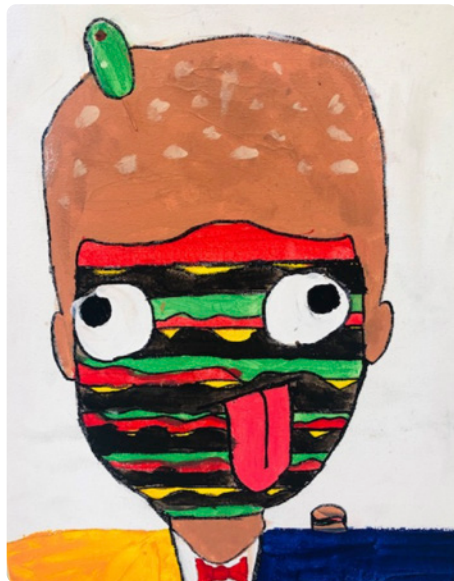
W25CPA1B
Friday, January 17
9:00 a.m. to 4:00 p.m.
\$85.00 (No HST)

Location: At Centre
Sessions: 1 Friday
Instructor: Gabby Dayao
Level: Ages 7 - 10

GOURMET ART – STRAWBERRY JAM SESSION

W25CPA1C
Friday, January 17
9:00 a.m. to 4:00 p.m.
\$85.00 (No HST)

Location: At Centre
Sessions: 1 Friday
Instructor: Toni Calderone
Level: Ages 8 - 12



Artist credit: NPCC Student

It was a rainy day in Artsyville... and all the kids rejoiced! - By the dozens they ran inside to gather their favourite art supplies. Once they settled in their seats to plan out all their artsy feats, they quickly came to realize a rumbling, gurgly sound of size! "How could this be?", said Alex Magee, who only stood but three-foot-three, "This can't be my hungry tummy, I just ate my lunch from mummy... we all just ate our lunch, we have no need for further crunch". But still, the sound persisted, until the group insisted: "Teacher what is this gurgly sound? We can hear it all around!" The teacher spoke with words of wisdom and calmly answered, as they listened "this sound is the creative spirit, who wanted you to loudly hear it! Let's all answer with our paints and brushes and make food art until it hushes!" So, on they went and a good thing too, for the art they made was a serving for two! The spirit was satisfied, and the kids fell calm. They too were satisfied as life went on. Join this P.A. Day camp for an amazing food inspired art experience. Children will be led by expert instructors and child and youth care workers who love art. All materials are included.

Extended Care A.M.

W25CPA1EX1
Friday, January 17
7:30 a.m. to 9:00 a.m.
\$12.00 (No HST)

Sessions: 1 Friday
Location: At Centre
Level: Ages 5 - 12

Extended Care P.M.

W25CPA1EX2
Friday, January 17
4:00 p.m. to 5:30 p.m.
\$12.00 (No HST)

Sessions: 1 Friday
Location: At Centre
Level: Ages 5 - 12



Artist credit: NPCC Student

WINTER P.A. DAY CAMP 2: EXTRA! EXTRA!

FRIDAY, FEBRUARY 14, 2025

EXTRA! EXTRA! – KID GENIUS MAKES HEADLINES!

W25CPA2A
Friday, February 14
9:00 a.m. to 4:00 p.m.
\$85.00 (No HST)

Location: At Centre
Sessions: 1 Friday
Instructor: Liha Ahmed
Level: 5 - 7

EXTRA! EXTRA! – MILLION DOLLAR MAPLE SYRUP SCULPTURE MELTS

W25CPA2B
Friday, February 14
9:00 a.m. to 4:00 p.m.
\$85.00 (No HST)

Location: At Centre
Sessions: 1 Friday
Instructor: Gabby Dayao
Level: 7 - 10

EXTRA! EXTRA! – NEW CREATURES DISCOVERED

W25CPA2C
Friday, February 14
9:00 a.m. to 4:00 p.m.
\$85.00 (No HST)

Location: At Centre
Sessions: 1 Friday
Instructor: Toni Calderone
Level: 8 - 12



Image credit: Freepik

Who brought their pet bluefin tuna to class? Where is my other tube sock? We just solved the mystery of dark matter in the universe! All announcements and exclamations are welcome as children explore artistic projects with a myriad of messages. Headlines of hyperbole, mysteries solved, and amazing discoveries are just a few themes to be explored as children are introduced to a variety of art materials. Skilled instructors and child and youth care workers will support with education on technique, composition and colour theory as children are encouraged through a variety of fun projects like frame-worthy news clippings, famous people character portraits and dimensional art discoveries. In this class, the medium really is the message. All materials are included.

Extended Care A.M.

W25CPA2EX1
Friday, Feb 14
to 9:00 a.m.
\$12.00 (No HST)

Location: At Centre
Sessions: 1 Friday 7:30 a.m.
Instructor: TBC
Level: Ages 5 - 12

Extended Care P.M.

W25CPA2EX2
Friday, February 14
to 5:30 p.m.
\$12.00 (No HST)

Location: At Centre
Sessions: 1 Friday 4:00 p.m.
Instructor: TBC
Level: Ages 5 - 12



Image credit: NPCC

SPRING 2025 P.A. DAY CAMP

SPRING P.A. DAY CAMP 1: TIME TO SHINE FRIDAY, JUNE 6, 2025

TIME TO SHINE: FLOWER BUDS, WEE BUGS AND BEASTIES

S25CPA1A Location: At Centre
Friday, June 6 Sessions: 1 Friday
9:00 a.m. to 4:00 p.m. Instructor: TBC
\$85.00 (No HST) Level: Ages 5-7

TIME TO SHINE: SPRING FORWARD

S25CPA1B Location: At Centre
Friday, June 6 Sessions: 1 Friday
9:00 a.m. to 4:00 p.m. Instructor: TBC
\$85.00 (No HST) Level: Ages 7-11

TIME TO SHINE: ART FROM A BIRD'S EYE VIEW

S25CPA1C Location: At Centre Friday,
Friday, June 6 Sessions: 1 Friday
9:00 a.m. to 4:00 p.m. Instructor: TBC
\$85.00 (No HST) Level: Ages 8-12

Rainbow rainfalls, budding gardens, awakening fields, and little ears and noses poking out of a cosy hollow to see if it's time to shine. These are some of the most wonderful and tiny treasures of spring. This class is all about observing those little moments of beauty and capturing them in fun and creative projects. Finger puppets, acrylic paintings and tiny sculptures will keep young creatives happy while the older groups explore artistic techniques, elements and principles with projects like perspective illustration, watercolour, acrylic landscape art and fun dimensional art projects in mixed media. Projects may include still life drawing, animal portraits, mixed media self-portraits in magical spring settings or watercolour wildlife paintings that can be reproduced to make beautiful cards or cool t-shirts. Our amazing team of skilled art instructors and counsellors will always be available to help guide participants with step-by-step instruction and support, as children create in the lovely NPCC studios with a view of the woods. Camps are tailored to different age groups: 5-7, 7-9, 9-11, and 11-14. To ensure every camper has the best experience, please sign up for your appropriate age group. All materials are included.

Extended Care A.M.

S25CPAEX1A Location: At Centre
Friday, June 6 Sessions: 1 Friday
7:30 a.m. to 9:00 a.m. Instructor: TBC
\$12.00 (No HST) Level: Ages 5 - 12

Games, colouring and social activities

Extended Care P.M.

S25CPAEX1B Location: At Centre Friday,
Friday, June 6 Sessions: 1 Friday
4:00 p.m. to 5:30 p.m. Instructor: TBC
\$12.00 (No HST) Level: Ages 5 - 12

Games, colouring and social activities



Artist credit: NPCC Student

CHILDREN'S MARCH BREAK CAMP

MARCH BREAK: MONDAY MARCH 10 TO FRIDAY MARCH 14, 2025

OUT OF THIS WORLD SPACE ADVENTURES

W25CMBC1 Location: At Centre
Monday, March 10 Sessions: 1 Friday
to Friday, March 14 Instructor: Liha Ahmed
9:00 a.m. to 4:00 p.m. Level: Ages 5-7
\$330.00 (No HST)

Buckle up and blast off into a week full of creativity and fun! Kids will explore the universe through exciting projects like glowing constellation art, crafting colourful rockets, creating space dragons, moon dancers, and designing their very own astronauts. Each day, we'll dive into space adventures using different art techniques like painting, sculpting, and mixed media. From rolling foil to making cute aliens to painting starry galaxies with pastels, this camp encourages imagination and hands-on creativity. Perfect for young explorers, it's an artistic adventure that's truly out of this world! All materials are included.

COLOURFUL CARNIVAL: MIXED MEDIA MAGIC

W25CMBX2 Location: At Centre
Monday, March 10 Sessions: 1 Friday
to Friday, March 14 Instructor: Gabby Dayao
9:00 a.m. to 4:00 p.m. Level: Ages 7 - 11
\$330.00 (No HST)

Unlock your child's creativity with Colourful Carnival – a catapult swing of dynamic, hands-on projects perfect for kids ages 7-11 who love to make, explore, and have fun. Each day, children will swoop into exciting art projects like painting, crafting, and sculpting using a variety of colourful materials. From imaginative designs to playful hands-on activities, your child will gain confidence in their creative abilities while making new friends. With professional guidance, plenty of playtime, and beautiful take-home creations, this camp promises a week full of amazing artistic expression. Sign up today for an unforgettable experience! All materials are included.

TIMELESS TECHNIQUES, MODERN MASTERPIECES

W25CMBX3 Location: At Centre
Monday, March 10 Sessions: 1 Friday
to Friday, March 14 Instructor: Afifa Bari
9:00 a.m. to 4:00 p.m. Level: Ages 8 - 11
\$330.00 (No HST)

Let your child hone creative skills and explore the fun and colourful world of famous artists! Each day, they'll dive into hands-on projects inspired by masters like Picasso, Dalí, Klint, Lempika, Varo, and Warhol. From creating playful Picasso-style faces to composing vibrant Van Gogh style portraits with unique materials, they'll get familiar with clay, watercolour, soft pastels, oil pastels and more! Kids will not only learn about famous artworks but also express themselves in new and imaginative ways. Whether it's sculpting a melting clock out of clay or designing a pop art masterpiece, they'll have a blast bringing their unique ideas to life. Plus, they'll take home awesome creations they can proudly display! This camp is perfect for young artists who love to explore, experiment, and have fun while learning. Sign up today and let your child's imagination soar! All materials are included.

Extended Care A.M.

W25CMBX1 Location: At Centre
Monday, March 10 Sessions: 1 Friday
to Friday, March 14 Instructor: TBC
7:30 a.m. to 9:00 a.m. Level: Ages 5 - 12
\$60.00 (No HST)

Extended Care P.M.

W25CMBX2 Location: At Centre
Monday, March 10 Sessions: 1 Friday
to Friday, March 14 Instructor: TBC
4:00 p.m. to 5:30 p.m. Level: Ages 5 - 12
\$60.00 (No HST)

SUMMER CAMP 2025

As a special feature, each week of Summer Camp will culminate with an end-of-week celebration of creativity, known as the Young Artists' Show (YAS)! This show features the projects created during camp with a variety of mediums and unique perspectives. Parents/guardians, siblings, grandparents, additional family members, and friends are invited to join us every **Friday from 3:30 p.m. to 4:30 p.m.** to enjoy a presentation of art and fine crafts by all campers. Be sure to visit every room to see an amazing variety of projects!



Artist credit: NPCC student



Image credit: Freepik



Image credit: NPCC

JULY 2 - 4, 2025 (3 DAY WEEK) WEEK 1: FERRIS WHEELS AND FLYING COLOURS

(NO CAMP DATES: MONDAY JUNE 30, TUESDAY JULY 1, 2025)

Bright eyes and smiling faces are everywhere while streams of colour and light sweep past in a blur. Waves of roaring laughter fade and focus as rides spin, loop and twirl, and shiny candy apples, steaming corn dogs and deliciously toasted ice cream waffles parade past and filling the air with more options than our bellies can handle. It's the summer fun we've all been waiting for so step right up and hurry, hurry, hurry to this summer camp of amusement park fun! Children are introduced to a thrilling variety of art projects and media as they make any selection of cotton candy crafts, cool balloon creations, roller coaster selfies and arcade art! Carnavalesque splatter paint projects, midway scenes, hand-made games, movable Ferris wheels, popcorn pop-ups and merry-go-round projects may also catch their fancy as they learn about: kinetic art, colour mixing, sculpting materials, painting techniques, pastel art, etching and creative collage! Our amazing art instructors and counsellors are a skilled group of child and youth care practitioners, and art specialists who love to share their knowledge with kids of all ages. Children get plenty of support and develop fine art skills with step-by-step instruction as plenty of fun and friendship fills the day. Children must be between the ages of 5 and 14 to get on this art ride. Please sign up for your appropriate age group. All materials are included.

CANDY APPLE CULTURE

SU25CW1A Ages 5 - 7
9:00 a.m. to 4:00 p.m. \$198.00 (No HST)

WINNER WINNER CHICKEN DINNER

SU25CW1B Ages 7 - 9
9:00 a.m. to 4:00 p.m. \$198.00 (No HST)

ARCADE ACE MEETS SUPREME SIZED STUFFIES

SU25CW1C Ages 9 - 11
9:00 a.m. to 4:00 p.m. \$198.00 (No HST)

MIDWAY MAVENS

SU25CW1D Ages 11 - 14
9:00 a.m. to 4:00 p.m. \$198.00 (No HST)

Extended Care: Morning

SU25CEX1A Ages 5 - 14
7:30 a.m. to 9:00 a.m. \$36.00 per week (no HST)

Extended Care: Afternoon

SU25CEX1B Ages 5 - 14
4:00 p.m. to 5:30 p.m. \$36.00 per week (no HST)



Artist credit: Emily Guzman

Campers in group A (Ages 5 - 7) will have both indoor and outdoor studios, with exclusive access to our new tents, available for outdoor art-making opportunities! They'll be inspired by the beautiful forest and parkland for a completely unique creative experience.

SUMMER CAMP 2025

JULY 7 - 11, 2025

WEEK 2: SEA SHELLS BY THE SEA SHORE

Pack your shades and sunscreen because we are heading to the beach! With bright smiles and the smell of coconut in the air, we will dive into a week of coastal creativity. Imagine the sun shining brightly, the sound of waves crashing, the poplars and tall grasses swaying as you explore the treasure trove of shoreline inspired projects. Children will create while using natural elements, smooth sea glass and seashells; they'll bring tropical aura to life with palm tree sunsets, sculpted clay starfish and curated curiosity jars. Imaginations will light up with glow-in-the-dark dolphin art, collaged mixed media mirrors, beachy resin art, and spectacular pastel projects. Developing painters will grow as artists as they learn new watercolour painting skills and interesting salt, resist, ink and we-on-wet techniques. For our animal lovers, we'll explore neurography art featuring both local and tropical fauna and flora like parrots, marine iguanas, tropical flowers and grassy sand dunes. Time to cool off? Surf's up! More advanced age groups create cool landscape and portrait art, and graphic art for surf boards! Our talented instructors and counsellors are a skilled group of child and youth care practitioners and art specialists who are happy to provide step-by-step support and customized art projects for every age group. To ensure every camper has the best experience, please sign up for your appropriate age group: 5-7, 7-9, 9-11, and 11-14. All materials are included.



SUNNY DAY SELFIES

SU25CW2A Ages 5 – 7
9:00 a.m. to 4:00 p.m. \$330.00 (No HST)

FLIP-FLOP FUN DAYS

SU25CW2B Ages 7 – 9
9:00 a.m. to 4:00 p.m. \$330.00 (No HST)

SANDCASTLES AND SURFER SLANG

SU25CW2C Ages 9 – 11
9:00 a.m. to 4:00 p.m. \$330.00 (No HST)

BOARDWALKS AND BEACH LIFE

SU25CW2D Ages 11 – 14
9:00 a.m. to 4:00 p.m. \$330.00 (No HST)

Extended Care: Morning

SU25CEX2A Ages 5 – 14
7:30 a.m. to 9:00 a.m. \$60.00 per week (no HST)

Extended Care: Afternoon

SU25CEX2B Ages 5 – 14
4:00 p.m. to 5:30 p.m. \$60.00 per week (no HST)



JULY 14 – 18, 2025

WEEK 3: MYSTERIES OF THE DEEP

Release the Kraken! ...And while he's distracted, take a deep dive into the trove of undersea treasures to recover Neptune's long lost black pearl. Sail past mermaids singing their mesmerizing melodies and ride on the wake of the herculean Hydra. Whether it's the tempestuous sea that calls you to this class or the wonderful, colourful and teaming life of the coral reef, join us to explore the beauty and mystery, fantasy and reality of the deep and blue. Watercolour treasure maps, glistening jewels, three masted mixed media ships, and undiscovered islands made of polymer, paint and clay will keep the winds of imagination blowing into the sail of every little seafarer. Imaginariums, textile and fibre art characters with flowing hair and glistening flippy tails will meet landscape art projects in dreamy watercolour, silky acrylic and mixed media collage. Studies of sealife to develop drawing skills in pencil, ink and pastel, will allow students to grow as artists and techniques in printmaking methods open a new world of discovery for each age group. Our talented art instructors and counsellors are a skilled group of child and youth care practitioners and art specialists who are happy to provide step-by-step support and customized art projects for every age group. To ensure every camper has the best experience, please sign up for your appropriate age group: 5-7, 7-9, 9-11, and 11-14. All materials are included.

PIRATES AND MERMAIDS

SU25CW3A Ages 5 – 7
9:00 a.m. to 4:00 p.m. \$330.00 (No HST)

SHIMMERING SCALES AND WHALE'S TAILS

SU25CW3B Ages 7 – 9
9:00 a.m. to 4:00 p.m. \$330.00 (No HST)

MARINE MYTHS AND LEGENDS

SU25CW3C Ages 9 – 11
9:00 a.m. to 4:00 p.m. \$330.00 (No HST)

SCUBA SPECTACULAR

SU25CW3D Ages 11 – 14
9:00 a.m. to 4:00 p.m. \$330.00 (No HST)

Extended Care: Morning

SU25CEX3A Ages 5 – 14
7:30 a.m. to 9:00 a.m. \$60.00 per week (No HST)

Extended Care: Afternoon

SU25CEX3B Ages 5 – 14
4:00 p.m. to 5:30 p.m. \$60.00 per week (No HST)



Campers in group A (Ages 5 - 7) will have both indoor and outdoor studios, with exclusive access to our new tents, available for outdoor art-making opportunities! They'll be inspired by the beautiful forest and parkland for a completely unique creative experience.

SUMMER CAMP 2025

JULY 21 – 25, 2025

WEEK 4: MIXED MEDIA ART LAB

Unlock your creativity and dive into a world where art and science meet to inspire movable masterpieces, curious effects and combinations. Children will craft kinetic art and build articulated puppets, design pinball machines, make tubular ball runs, and work with engineering principles, blending imagination with experimentation. They'll explore the mesmerizing world of lava lamps, kaleidoscopes, and optical illusions, and unlock the secrets of using colour, light, and motion in art. For our older group, the adventure continues with more advanced challenges! They'll push their creative limits by mastering visual rhythmic effects, dimensional a luminescent paint projects, and by designing kinetic sculptures and interactive art. This week will ignite both artistic vision and scientific curiosity through thrilling hands-on projects, guided by our amazing team of art instructors and counsellors. Camps are tailored to different age groups: 5-7, 7-9, 9-11, and 11-14, to ensure every camper has the best experience. Please sign up for your appropriate age group. All materials are included.



Image credit: Freepik

POP, FLIP, SQUISH AND ZIP

SU25CW4A Ages 5 – 7
9:00 a.m. to 4:00 p.m. \$330.00 (No HST)

MAKE IT MOVE! KINETIC ART AND MORE

SU25CW4B Ages 7 – 9
9:00 a.m. to 4:00 p.m. \$330.00 (No HST)

MODULAR ART MOMENTS

SU25CW4C Ages 9 – 11
9:00 a.m. to 4:00 p.m. \$330.00 (No HST)

AI AND U: MODERN ART FOR HUMANS

SU25CW4D Ages 11 – 14
9:00 a.m. to 4:00 p.m. \$330.00 (No HST)

Extended Care: Morning

SU25CEX4A Ages 5 – 14
7:30 a.m. to 9:00 a.m. \$60.00 per week (no HST)

Extended Care: Afternoon

SU25CEX4B Ages 5 – 14
4:00 p.m. to 5:30 p.m. \$60.00 per week (no HST)



JULY 28 - AUGUST 1, 2025

WEEK 5: ARTIST'S STUDIO COMBO WITH FRIES

A pinch of POP goes a long way in this session where 'chill before serving' means we've got cool art projects for every palette. Paired with a traditional Matisse style or a savoury Miro, students will have the fun of learning about artists' unique styles and mixing them with their favourite food. How about a full-bodied Rubens sandwich or an American Gothic apple pie? More of a grab-and-go creator? Don't settle for anything less than a well combined honeydew Boba with a splash Kusama or a double scoop of bitter-sweet Lichtenstein! The meat and potatoes of all this is that children will have a wonderful time sculpting, crafting, painting and weaving wonderful works of delicious wit and good taste. Skilled NPCC art instructors and counsellors will provide step-by-step support as students build skills in observation and composition development, colour mixing, and learn about artistic elements and principles in the most fun and interactive way possible. From practical pieces to wall-worthy works, kids will be so satisfied that the only thing they'll want to do when they get home is draw a bath and the curtains! Camps are divided by age groups: 5-7, 7-9, 9-11 and 11-14. Please sign up for your appropriate group. All materials are included.

FLAP-JACKSON POLLOCK

SU25CW5A Ages 5 – 7
9:00 a.m. to 4:00 p.m. \$330.00 (No HST)

CLAES OLDEN-BURGER

SU25CW5B Ages 7 – 9
9:00 a.m. to 4:00 p.m. \$330.00 (No HST)

GEORGIA O'PEACH

SU25CW5C Ages 9 – 11
9:00 a.m. to 4:00 p.m. \$330.00 (No HST)

LIGHTLY SEASONED STILL LIFE AND PIQUANT PORTRAITS

SU25CW5D Ages 11 – 14
9:00 a.m. to 4:00 p.m. \$330.00 (No HST)

Extended Care: Morning

SU25CEX5A Ages 5 – 14
7:30 a.m. to 9:00 a.m. \$60.00 per week (no HST)

Extended Care: Afternoon

SU25CEX5B Ages 5 – 14
4:00 p.m. to 5:30 p.m. \$60.00 per week (no HST)



Image credit: Freepik

Camper in group A (Ages 5 - 7) will have both indoor and outdoor studios, with exclusive access to our new tents, available for outdoor art-making opportunities! They'll be inspired by the beautiful forest and parkland for a completely unique creative experience.

SUMMER CAMP 2025

AUGUST 5 – 8, 2025 (4-DAY WEEK) WEEK 6: TIE DYE, SPLATTER, POUR NO CLASS DATE MONDAY AUGUST 4, 2025

Get ready to splash, swirl, and splatter your way into a wild world of colour and creativity! This week, campers will explore the coolest and most eye-popping art techniques that will ignite their imaginations and let their personalities shine. From bold to subtle, there's something for everyone to love in this hands-on week of artistic fun. Kids will make tie-dye shirts and accessories, get messy with abstract acrylic pours and splatter art, and explore the magic of melting with wax crayon drips or collagraph printmaking techniques. Feeling dreamy? campers can step into a surreal world of wonder where they can explore creations inspired by artists like Magritte, as they play with scale, proportion and combined themes. Feeling crafty? From collages, beadwork, and stone mosaics to weaving magic with fibre art and learning ombre dyeing techniques, each age group will have projects specifically tailored to their skill level. For our more mature painters-in-the-making, we're diving into abstract acrylic landscapes where participants will sharpen their observation skills and compose stunning natural scenes. Every day will be a splash of fun and discovery as skilled instructors and counsellors guide and support children step-by-step. As they build confidence and technical skills, engaging lessons in colour mixing theory and the elements and principles of art and design will set campers up for success. Camps are divided by age group: 5-7, 7-9, 9-11 and 11-14. Please sign up for your appropriate age group. All materials are included.

COLOURFUL CREATIONS CLUB

SU25CW6A Ages 5 – 7
9:00 a.m. to 4:00 p.m. \$264.00 (No HST)

WE SOLEMNLY SWEAR WE ARE UP TO GREAT ART

SU25CW6B Ages 7 – 9
9:00 a.m. to 4:00 p.m. \$264.00 (No HST)

ARTIST STUDIO SPECTACULAR

SU25CW6C Ages 9 – 11
9:00 a.m. to 4:00 p.m. \$264.00 (No HST)

COOL GEAR AND DIY SKILLS

SU25CW6D Ages 11 – 14
9:00 a.m. to 4:00 p.m. \$264.00 (No HST)

Extended Care: Morning

SU25CEX6A Ages 5 – 14
7:30 a.m. to 9:00 a.m. \$48.00 per week (no HST)

Extended Care: Afternoon

SU25CEX6B Ages 5 – 14
4:00 p.m. to 5:30 p.m. \$48.00 per week (no HST)



Image credit: NPCC

AUGUST 11 – 15, 2025 WEEK 7: COOL CHARACTERS: MANGA, 8BIT, PIXEL, SEMI REALISM AND MORE

Learn to draw your favourite characters from the most binge-worthy shows, video games, cartoons, comics, Manga and more! Explore figure drawing inspired by pixel and 8-bit style, semi realism and realism, and learn to draw many types of facial features, hair styles and clothing that communicates movement and environment. Experiment with a variety of media such as ink, watercolour, acrylic paint, pencil, collage and more, to express light, shadow and perspective, and have fun developing your own characters too! As the week progresses, participants can take things a step further by crafting and painting their own character figures to make cool collectable style sculptures, felt stuffies and so much more. Projects will be tuned to the skills and interests of each age group and classes will be led by our wonderful team of fun, kind and supportive art instructors and counsellors who are also experienced in child and youth care. All materials are included.

CUTE CREATURES AND HEROICS HYBRIDS

SU25CW7A Ages 5 – 7
9:00 a.m. to 4:00 p.m. \$330.00 (No HST)

GAME ON! FANTASY, FOLKLORE AND FICTION

SU25CW7B Ages 7 – 9
9:00 a.m. to 4:00 p.m. \$330.00 (No HST)

MINI AND MEGA MASH-UP

SU25CW7C Ages 9 – 11
9:00 a.m. to 4:00 p.m. \$330.00 (No HST)

MAGES, TITANS, AND OTHER 'SLAY' CHARACTERS

SU25CW7D Ages 11 – 14
9:00 a.m. to 4:00 p.m. \$330.00 (No HST)

Extended Care: Morning

SU25CEX7A Ages 5 – 14
7:30 a.m. to 9:00 a.m. \$60.00 per week (no HST)

Extended Care: Afternoon

SU25CEX7B Ages 5 – 14
4:00 p.m. to 5:30 p.m. \$60.00 per week (no HST)



Image credit: Freepik

Campers in group A (Ages 5 - 7) will have both indoor and outdoor studios, with exclusive access to our new tents, available for outdoor art-making opportunities! They'll be inspired by the beautiful forest and parkland for a completely unique creative experience.

SUMMER CAMP 2024

AUGUST 18 – 22, 2025 WEEK 8: ARTISTS IN ORBIT

Prepare for lift-off as we journey into the vast wonders of outer space! This week, campers will launch creativity sky-high and explore galaxies far, far away through a series of cosmic art projects that are truly out of this world. Bright stars, orbiting planets, mysterious creatures and spinning satellites will spark imaginations and inspire infinite ideas. Children will create their very own balloon print planets and craft stunning asteroid belt art, they'll step into the space boots of an astronaut and consider our familiar pale blue dot from afar, and grow as artists as they freely float their imaginations. Things will really light up with glow-in-the-dark creatures, galaxy light jars, and radiant constellation art! For our budding painters and older groups, we'll dive into galaxy spin painting, fluorescent art, and luminescent mixed media works to expand their horizons of media use. Life drawing projects and dimensional art projects will provide foundational development as children and teens build skills in observation and composition development. All participants will discover the secrets of colour mixing and artistic principles in the most fun and interactive way possible under the guidance of our stellar 'mission control' team of kind and supportive instructors and counsellors. Camps are divided by age groups: 5-7, 7-9, 9-11 and 11-14. Please sign up for your appropriate age group. All materials are included.



Artist credit: NPCC Student

COSMIC CHARACTERS

SU25CW8A Ages 5 – 7
9:00 a.m. to 4:00 p.m. \$330.00 (No HST)

EXTRAORDINARY EXPEDITIONS

SU25CW8B Ages 7 – 9
9:00 a.m. to 4:00 p.m. \$330.00 (No HST)

GLITTERING GALAXIES

SU25CW8C Ages 9 – 11
9:00 a.m. to 4:00 p.m. \$330.00 (No HST)

SOUVENIRS FROM THE INKY BLACK

SU25CW8D Ages 11 – 14
9:00 a.m. to 4:00 p.m. \$330.00 (No HST)

Extended Care: Morning

SU25CEX8A Ages 5 – 14
7:30 a.m. to 9:00 a.m. \$60.00 per week (no HST)

Extended Care: Afternoon

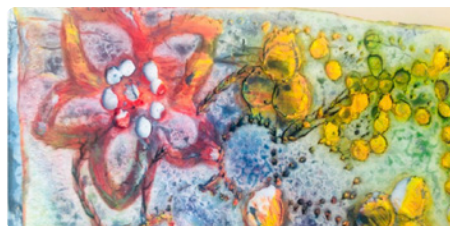
SU25CEX8B Ages 5 – 14
4:00 p.m. to 5:30 p.m. \$60.00 per week (no HST)



Artist credit: NPCC Student

AUGUST 25 – 29, 2025 WEEK 9: THE WONDER OF NATURE

Get ready to unleash your wild side and venture into the wonders of nature in this exciting week of camp! From fluttering butterflies to breathtaking landscapes, we're turning our art studio into a vibrant celebration of the natural environment. Packed with creativity, discovery, and exciting hands-on experimentation, projects will inspire new ways of using familiar items found outdoors and new techniques to express the beauty of our world. Children will enjoy creating shimmering suncatchers, vibrant felt flowers, bohemian twig wall hangings, and beautiful landscape and figurative art using a variety of media such as watercolour, acrylic, pastel, specialty paper, clay, and more. Children will explore dimensional art through natural media sculpt projects, as well as create wildlife-themed games and artistic objects for practical use. Our aspiring painters and older groups will immerse themselves in more complex projects like dioramas and mixed media collages of animals and will explore the artistic elements and principles of creating a well balanced composition in both acrylic and watercolour, honing their skills in layering, blending, and creating beautiful painterly effects. Our amazing team of skilled art instructors and counsellors will always be available to help guide participants with step-by-step instruction and support, as children create in the lovely NPCC studios with a view of the woods. Camps are tailored to different age groups: 5-7, 7-9, 9-11, and 11-14. To ensure every camper has the best experience, please sign up for your appropriate age group. All materials are included.



Artist credit: NPCC Student

Campers in group A (Ages 5 - 7) will have both indoor and outdoor studios, with exclusive access to our new tents, available for outdoor art-making opportunities! They'll be inspired by the beautiful forest and parkland for a completely unique creative experience.

PRINTS, PATTERNS, AND PAWS

SU25CW9A Ages 5 – 7
9:00 a.m. to 4:00 p.m. \$330.00 (No HST)

SCENES FROM A SECRET GARDEN

SU25CW9B Ages 7 – 9
9:00 a.m. to 4:00 p.m. \$330.00 (No HST)

WILDLIFE OF THE WORLD

SU25CW9C Ages 9 – 11
9:00 a.m. to 4:00 p.m. \$330.00 (No HST)

MIXED MEDIA ANIMAL PORTRAITS AND LANDSCAPE ART

SU25CW9D Ages 11 – 14
9:00 a.m. to 4:00 p.m. \$330.00 (No HST)

Extended Care: Morning

SU25CEX9A Ages 5 – 14
7:30 a.m. to 9:00 a.m. \$60.00 per week (no HST)

Extended Care: Afternoon

SU25CEX9B Ages 5 – 14
4:00 p.m. to 5:30 p.m. \$60.00 per week (no HST)

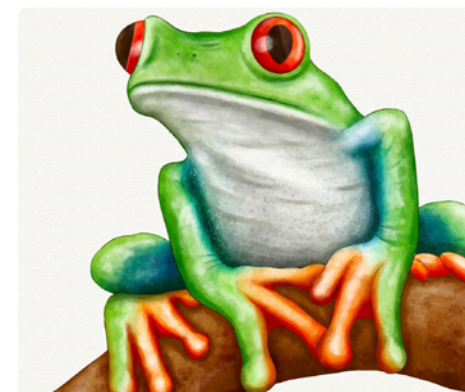


Image credit: Freepik



Artist credit: NPCC student



Artist credit: NPCC student



Artist credit: NPCC student



Artist credit: NPCC student



Artist credit: Freepik

FAMILY ART SESSIONS

Join us in August for any of the two evening Family Art sessions with Toni. The workshops are open to all family members as well as individuals. Participants under the age of 5 years are to register but can participate at no cost. Have fun creating unique works of art using interesting mediums!

PLAY WITH CLAY

SU25FAM1
Thursday, August 7
6:00 p.m. to 8:00 p.m.
\$30.00 (With HST \$33.90)

Location: At Centre
Instructor: Toni Calderone
Level: All Levels

Make your own clay pot or garden signs for your indoor or outdoor oasis! Enjoy forming and applying floral designs, lettering or any shapes of your choice to a pot or a shape a tablet that you might attach to a ground stake. Toni will guide participants step-by-step and help everyone realize their one-of-a-kind design. Learn to use a variety of tools to etch designs into the wet clay as well, so that when your piece dries at home, you can use your imagination to paint it. If you like the idea of pressing decorative glass or porcelain pieces into your project, feel free to bring any unique items from home, or use some of the items we will have on hand at the centre. All children must be accompanied by an adult. Family art is open to anyone who would like to join Toni on an exciting artistic journey. All materials are included.



PAINT YOUR FAMILY TREE

SU25FAM2
Thursday, August 14
6:00 p.m. to 8:00 p.m.
\$30.00 (With HST \$33.90)

Location: At Centre
Instructor: Toni Calderone
Level: All Levels

Create a beautiful family tree template that you can keep adding to as time goes on! Using acrylic paints on canvas, and a variety of techniques like stenciling, stamping and mark making, shape leafy branches with spaces for all your special people's faces. Choose to make it a tree for a single season or all four seasons as you happily explore colour, texture and creative media. Once you have established your design, add flat pebble stones for each member of your family to create one-of-a-kind mini portraits. You really will cherish this work of art over the years. Don't forget your pets! All children must be accompanied by an adult. Family art is open to anyone who would like to join Toni on an exciting artistic journey. All materials are included. All materials are included.

ADULT CLASSES

POWER PAINTING: COLOUR COMPOSITION AND ENERGY

SU25APP
Thursday August 7,
to Thursday August 28
6:00 p.m. to 9:00 p.m.
\$156.00 (With HST \$176.28)

Location: At Centre
Instructor: Steve Rose
Level: All Levels

This session will focus on strong colour, bold composition, and the dynamic energy of contemporary painting. Activate your sense of space, harmony and balance while fine-tuning the partnership between creative force and decision. The process of vision to execution will be supported with individual attention in regard to materials, concept, and technique in consultation with Steve Rose: MFA, exhibiting artist, and expert instructor. This will be a busy, active studio experience with plenty of inspiration provided through examples and brief lecture sessions to highlight the techniques and subjects of successful compositions and influencing artists. We look forward to seeing you there. For a materials list, please check out website.

ADULT WORKSHOPS

THE FIGURE IN LANDSCAPE

SU25AFIL
Monday, July 21
10:00 a.m. to 3:00 p.m.
\$75.00 (With HST \$84.75)

Location: At Centre
Instructor: Steve Rose
Level: All Levels

Utilizing and placing the figure in the landscape can be very effective in creating a powerful painting. This can be seen in both historical and contemporary fine art practice. With this in mind, the course will focus on activities of creating strong compositions based on landscape and/or interiors with a view inspired by great masters past and present. This is a fascinating opportunity to work from travel photos, family/personal nostalgia imagery and memory. Initial active grounds of your compositions may be a single source or a hybrid of diverse inspiration from artists such as David Hockney, Rose Hilton, Matisse, Mary Frank, Richard Diebenkorn and Canadian Kim Dorland. Join this class for a unique experience that will be exciting, challenging and that will evoke something new and different. For a materials list, please check our website.

MIXED MEDIA ACRYLIC PAINT & COLLAGE

SU25AMMA
Tuesday August 12, 2025
6:00 p.m. to 8:00 p.m.
\$30.00 (With HST \$33.90)

Location: At Centre
Instructor: Toni Calderone
Level: All Levels

Using a stretched canvas as a substrate, participants will build up the surface using acrylic paints, textured materials, specialty papers, or any other media to create an artistic composition. All materials including matte and gloss medium and collage materials will be provided but students are welcome to bring items from home to include into their projects. Registrants enjoy the relaxing and creative atmosphere with fellow learners as they experiment with mark making tools to enhance texture in soft pastel, acrylic paints and inks and can even include textiles and found items to their projects. Participants will be encouraged to work with spontaneity, and embrace colour, and texture to bring life to their artistic pieces. All materials are included.

WATERCOLOUR TECHNIQUES

SU25AWT
Tuesday August 5
6:00 p.m. to 8:00 p.m.
\$30.00 (With HST \$33.90)

Location: At Centre
Instructor: Toni Calderone
Level: All Levels

Get to know watercolour. In this session, students are able to sample and explore a variety of basic watercolour applications such as how to create an attractive wash and base colour selection. They will have the chance to learn techniques such as wet-in-wet and wet-on-dry painting, scumbling and texturization to achieve the effects seen in successful watercolour compositions. Using provided paints and quality watercolour paper, participants will be able to experiment with brush strokes, paint saturation and colour mixing, and will be provided with examples of how to plan a painting in accordance with drying times required to achieve certain results. Registrants will enjoy plenty of support as they paint a landscape, a floral, a broad sky and seascape, or a local forest scene. As a final step, students will be given the opportunity to add touches of detail using inks and markers to enhance those areas they wish to develop or create a focal point. Photo references are welcome, and options will also be made available by the instructor. All materials are included.



Family Day At NPCC!!!

Monday, February 17, 2025

Activities from

10:00 a.m. - 3:30 p.m.

FREE!

Enjoy family time in a fun and creative setting! Meet our instructors and enjoy a winter treat! Yum!

ACTIVITIES:

- Personalized Family Name Plates
- Clay Sculpt Project
- Family Connections String Art
- Fibre Art
- Rock Families
- Painting Project
- Floral Garland Picture Frame
- A Family Watercolour Art Project

Featuring: Drop-in craft sessions and quick single sitting portraits by artists Helen McCusker and Paul McCusker.

Activities are free but require registration. Spaces are limited.

REGISTER TODAY!

neilsonparkcreativecentre.com | 416-622-5294

56 Neilson Drive, Toronto, ON M9C 1V7

julia@neilsonparkcreativecentre.com

MARCH BREAK & P.A. DAY CAMP INDEX 2025

All classes are located in-centre

Type	Course Code	Title	Session Name	Days	Start Date	End Date	Start Time	End Time	Instructor	Level (Ages)	Days	Total Fee	Pg. #
Winter P.A. Day 1	W25CPA1A	Gourmet Art	Personality Pizza	Fri.	17-Jan-25	17-Jan-25	9:00 a.m.	4:00 p.m.	Liha Ahmed	Ages 5 - 7	1	\$85.00 (No HST)	6
Winter P.A. Day 1	W25CPA1B	Gourmet Art	Donut Eat the Micro Chips	Fri.	17-Jan-25	17-Jan-25	9:00 a.m.	4:00 p.m.	Gabby Dayao	Ages 7 - 11	1	\$85.00 (No HST)	6
Winter P.A. Day 1	W25CPA1C	Gourmet Art	Strawberry Jam Session	Fri.	17-Jan-25	17-Jan-25	9:00 a.m.	4:00 p.m.	Toni Calderone	Ages 8 - 12	1	\$85.00 (No HST)	6
Extended Care	W25CPA1EX1	Extended Care A.M.	Colouring and Crafting	Fri.	17-Jan-25	17-Jan-25	7:30 a.m.	9:00 a.m.	NPCC Staff	Ages 5 - 12	1	\$12.00 (No HST)	6
Extended Care	W25CPA1EX2	Extended Care P.M.	Colouring and Crafting	Fri.	17-Jan-25	17-Jan-25	4:00 p.m.	5:30 p.m.	NPCC Staff	Ages 5 - 12	1	\$12.00 (No HST)	6
Winter P.A. Day 2	W25CPA2A	Extra! Extra!	Kid Genius Makes Headlines!	Fri.	14-Feb-25	14-Feb-25	9:00 a.m.	4:00 p.m.	Liha Ahmed	Ages 5 - 7	1	\$85.00 (No HST)	7
Winter P.A. Day 2	W25CPA2B	Extra! Extra!	Million Dollar Maple Syrup Sculpture Melts	Fri.	14-Feb-25	14-Feb-25	9:00 a.m.	4:00 p.m.	Gabby Dayao	Ages 7 - 11	1	\$85.00 (No HST)	7
Winter P.A. Day 2	W25CPA2C	Extra! Extra!	New Creatures Discovered	Fri.	14-Feb-25	14-Feb-25	9:00 a.m.	4:00 p.m.	Toni Calderone	Ages 8 - 12	1	\$85.00 (No HST)	7
Extended Care	W25CPA2EX1	Extended Care A.M.	Colouring and Crafting	Fri.	14-Feb-25	14-Feb-25	7:30 a.m.	9:00 a.m.	NPCC Staff	Ages 5 - 12	1	\$12.00 (No HST)	7
Extended Care	W25CPA2EX2	Extended Care P.M.	Colouring and Crafting	Fri.	14-Feb-25	14-Feb-25	4:00 p.m.	5:30 p.m.	NPCC Staff	Ages 5 - 12	1	\$12.00 (No HST)	7
Mar. Break Camp	W25CMBC1	March Break Camp	Out of This World Space Adventures	Mon. - Fri.	10-Mar-25	14-Mar-25	9:00 a.m.	4:00 p.m.	Liha Ahmed	Ages 5 - 7	5	\$330.00 (No HST)	9
Mar. Break Camp	W25CMBC2	March Break Camp	Colourful Carnival	Mon. - Fri.	10-Mar-25	14-Mar-25	9:00 a.m.	4:00 p.m.	Gabby Dayao	Ages 7 - 11	5	\$330.00 (No HST)	9
Mar. Break Camp	W25CMBC3	March Break Camp	Timeless Techniques, Modern Masterpieces	Mon. - Fri.	10-Mar-25	14-Mar-25	9:00 a.m.	4:00 p.m.	Afifa Bari	Ages 8 - 12	5	\$330.00 (No HST)	9
Extended Care	W25CMBEX1	Extended Care A.M.	Colouring and Crafting	Mon. - Fri.	10-Mar-25	14-Mar-25	7:30 a.m.	9:00 a.m.	NPCC Staff	Ages 5 - 12	5	\$60 (No HST)	9
Extended Care	W25CMBEX2	Extended Care P.M.	Colouring and Crafting	Mon. - Fri.	10-Mar-25	14-Mar-25	4:00 p.m.	5:30 p.m.	NPCC Staff	Ages 5 - 12	5	\$60 (No HST)	9
Spring P.A. Day 1	S25CPA1A	Time to Shine	Flower Buds, Wee Bugs and Beasties	Fri.	06-Jun-25	06-Jun-25	9:00 a.m.	4:00 p.m.	TBD	Ages 5 - 7	1	\$85.00 (No HST)	8
Spring P.A. Day 1	S25CPA1B	Time to Shine	Spring Forward	Fri.	06-Jun-25	06-Jun-25	9:00 a.m.	4:00 p.m.	TBD	Ages 7 - 11	1	\$85.00 (No HST)	8
Spring P.A. Day 1	S25CPA1C	Time to Shine	Art From a Birds Eye View	Fri.	06-Jun-25	06-Jun-25	9:00 a.m.	4:00 p.m.	TBD	Ages 8 - 12	1	\$85.00 (No HST)	8
Extended Care	S25CPAEX1A	Extended Care A.M.	Games, colouring and social activities	Fri.	06-Jun-25	06-Jun-25	7:30 a.m.	9:00 a.m.	NPCC Staff	Ages 5 - 12	1	\$12.00 (No HST)	8
Extended Care	S25CPAEX1B	Extended Care P.M.	Games, colouring and social activities	Fri.	06-Jun-25	06-Jun-25	4:00 p.m.	5:30 p.m.	NPCC Staff	Ages 5 - 12	1	\$12.00 (No HST)	8

FAMILY ART & ADULT SUMMER 2025 INDEX

Type	Course Code	Title	Level (Ages)	Days	Start Date	End Date	Weeks/ Sessions	Start Time	End Time	Location	Instructor	Fee Pre HST	Total Fee w/ HST	Pg.
Adult Class	SU25APP	Power Painting: Colour Composition and Energy	All Levels	Thursday	Aug. 7 '25	Aug. 28 '25	4 Thursdays	6:00 p.m.	9:00 p.m.	At Centre	Steve Rose	\$156.00	\$176.28	21
Adult Workshop	SU25AFIL	The Figure in Landscape	All Levels	Monday	Jun. 21 '25	Jun. 21 '25	1 Monday	10:00 a.m.	3:00 p.m.	At Centre	Steve Rose	\$75.00	\$84.75	22
Adult Workshop	SU25AWT	Watercolour Techniques	All Levels	Tuesday	Aug. 5 '25	Aug. 5 '25	1 Tuesday	6:00 p.m.	8:00 p.m.	At Centre	Toni Calderone	\$30.00	\$33.90	22
Adult Workshop	SU25AMMA	Mixed Media Acrylic Paint & Collage	All Levels	Tuesday	Aug. 12 '25	Aug. 12 '25	1 Tuesday	6:00 p.m.	8:00 p.m.	At Centre	Toni Calderone	\$30.00	\$33.90	22
Family Art	SU25FAM1	Play With Clay	All Levels	Thursday	Aug. 7 '25	Aug. 7 '25	1 Thursday	6:00 p.m.	8:00 p.m.	At Centre	Toni Calderone	\$30.00	\$33.90	21
Family Art	SU25FAM2	Paint Your Family Tree	All Levels	Thursday	Aug. 14 '25	Aug. 14 '25	1 Thursday	6:00 p.m.	8:00 p.m.	At Centre	Toni Calderone	\$30.00	\$33.90	21

SUMMER CAMP 2025 INDEX



All classes are located in-centre

Type	Course Code	Title	Session Name	Level (Ages)	Days	Start Date	End Date	No Class	Start Time	End Time	Instructor	Days	Total Fee	Pg.
Week 1	SU25CW1A	Ferris Wheels and Flying Colours	Candy Apple Culture	Ages 5-7	Wed. - Fri.	02-Jul-25	04-Jul-25	June 30, July 1	9:00 a.m.	4:00 p.m.	TBD	3	\$198.00 (No HST)	11
	SU25CW1B	Ferris Wheels and Flying Colours	Winner Winner Chicken Dinner	Ages 7-9	Wed. - Fri.	02-Jul-25	04-Jul-25	June 30, July 1	9:00 a.m.	4:00 p.m.	TBD	3	\$198.00 (No HST)	11
	SU25CW1C	Ferris Wheels and Flying Colours	Arcade Ace Meets Supreme Sized Stuffies	Ages 9-11	Wed. - Fri.	02-Jul-25	04-Jul-25	June 30, July 1	9:00 a.m.	4:00 p.m.	TBD	3	\$198.00 (No HST)	11
	SU25CW1D	Ferris Wheels and Flying Colours	Midway Mavens	Ages 11-14	Wed. - Fri.	02-Jul-25	04-Jul-25	June 30, July 1	9:00 a.m.	4:00 p.m.	TBD	3	\$198.00 (No HST)	11
	SU25CEX1A	Extended Care A.M.	Games, colouring and social activities	Ages 5-14	Wed. - Fri.	02-Jul-25	04-Jul-25	June 30, July 1	7:30 a.m.	9:00 a.m.	Counsellor on duty	3	\$36.00 (No HST)	11
	SU25CEX1B	Extended Care P.M.	Games, colouring and social activities	Ages 5-14	Wed. - Fri.	02-Jul-25	04-Jul-25	June 30, July 1	4:00 p.m.	5:30 p.m.	Counsellor on duty	3	\$36.00 (No HST)	11
Week 2	SU25CW2A	Seashells by the Sea Shore	Sunny Day Selfies	Ages 5-7	Mon. - Fri.	07-Jul-25	11-Jul-25		9:00 a.m.	4:00 p.m.	TBD	5	\$330.00 (No HST)	12
	SU25CW2B	Seashells by the Sea Shore	Flip-Flop Fun Days	Ages 7-9	Mon. - Fri.	07-Jul-25	11-Jul-25		9:00 a.m.	4:00 p.m.	TBD	5	\$330.00 (No HST)	12
	SU25CW2C	Seashells by the Sea Shore	Sand Castles and Surfer Slang	Ages 9-11	Mon. - Fri.	07-Jul-25	11-Jul-25		9:00 a.m.	4:00 p.m.	TBD	5	\$330.00 (No HST)	12
	SU25CW2D	Seashells by the Sea Shore	Boardwalks and Beach Life	Ages 11-14	Mon. - Fri.	07-Jul-25	11-Jul-25		9:00 a.m.	4:00 p.m.	TBD	5	\$330.00 (No HST)	12
	SU25CEX2A	Extended Care A.M.	Games, colouring and social activities	Ages 5-14	Mon. - Fri.	07-Jul-25	11-Jul-25		7:30 a.m.	9:00 a.m.	Counsellor on duty	5	\$60.00 (No HST)	12
	SU25CEX2B	Extended Care P.M.	Games, colouring and social activities	Ages 5-14	Mon. - Fri.	07-Jul-25	11-Jul-25		4:00 p.m.	5:30 p.m.	Counsellor on duty	5	\$60.00 (No HST)	12
Week 3	SU25CW3A	Mysteries of the Deep	Pirates and Mermaids	Ages 5-7	Mon. - Fri.	14-Jul-25	18-Jul-25		9:00 a.m.	4:00 p.m.	TBD	5	\$330.00 (No HST)	13
	SU25CW3B	Mysteries of the Deep	Shimmering Scales and Whale's Tails	Ages 7-9	Mon. - Fri.	14-Jul-25	18-Jul-25		9:00 a.m.	4:00 p.m.	TBD	5	\$330.00 (No HST)	13
	SU25CW3C	Mysteries of the Deep	Marine Myths and Legends	Ages 9-11	Mon. - Fri.	14-Jul-25	18-Jul-25		9:00 a.m.	4:00 p.m.	TBD	5	\$330.00 (No HST)	13
	SU25CW3D	Mysteries of the Deep	Scuba Spectacular	Ages 11-14	Mon. - Fri.	14-Jul-25	18-Jul-25		9:00 a.m.	4:00 p.m.	TBD	5	\$330.00 (No HST)	13
	SU25CEX3A	Extended Care A.M.	Games, colouring and social activities	Ages 5-14	Mon. - Fri.	14-Jul-25	18-Jul-25		7:30 a.m.	9:00 a.m.	Counsellor on duty	5	\$60.00 (No HST)	13
	SU25CEX3B	Extended Care P.M.	Games, colouring and social activities	Ages 5-14	Mon. - Fri.	14-Jul-25	18-Jul-25		4:00 p.m.	5:30 p.m.	Counsellor on duty	5	\$60.00 (No HST)	13

SUMMER CAMP 2025 INDEX (CONTINUED)



All classes are located in-centre

Type	Course Code	Title	Session Name	Level (Ages)	Days	Start Date	End Date	No Class	Start Time	End Time	Instructor	Days	Total Fee	Pg.
Week 4	SU25CW4A	Mixed Media Art Lab	Pop, Flip, Squish and Zip	Ages 5-7	Mon. - Fri.	21-Jul-25	25-Jul-25		9:00 a.m.	4:00 p.m.	TBD	5	\$330.00 (No HST)	14
	SU25CW4B	Mixed Media Art Lab	Make it Move! Kinetic Art and More	Ages 7-9	Mon. - Fri.	21-Jul-25	25-Jul-25		9:00 a.m.	4:00 p.m.	TBD	5	\$330.00 (No HST)	14
	SU25CW4C	Mixed Media Art Lab	Modular Art Moments	Ages 9-11	Mon. - Fri.	21-Jul-25	25-Jul-25		9:00 a.m.	4:00 p.m.	TBD	5	\$330.00 (No HST)	14
	SU25CW4D	Mixed Media Art Lab	AI and U: Modern Art for Humans	Ages 11-14	Mon. - Fri.	21-Jul-25	25-Jul-25		9:00 a.m.	4:00 p.m.	TBD	5	\$330.00 (No HST)	14
	SU25CEX4A	Extended Care A.M.	Games, colouring and social activities	Ages 5-14	Mon. - Fri.	21-Jul-25	25-Jul-25		7:30 a.m.	9:00 a.m.	Counsellor on duty	5	\$60.00 (No HST)	14
	SU25CEX4B	Extended Care P.M.	Games, colouring and social activities	Ages 5-14	Mon. - Fri.	21-Jul-25	25-Jul-25		4:00 p.m.	5:30 p.m.	Counsellor on duty	5	\$60.00 (No HST)	14
Week 5	SU25CW5A	Artist's Studio Combo With Fries	Flap-Jackson Pollock	Ages 5-7	Mon. - Fri.	28-Jul-25	01-Aug-25		9:00 a.m.	4:00 p.m.	TBD	5	\$330.00 (No HST)	15
	SU25CW5B	Artist's Studio Combo With Fries	Claes Olden-BURGER	Ages 7-9	Mon. - Fri.	28-Jul-25	01-Aug-25		9:00 a.m.	4:00 p.m.	TBD	5	\$330.00 (No HST)	15
	SU25CW5C	Artist's Studio Combo With Fries	Georgia O'Peach	Ages 9-11	Mon. - Fri.	28-Jul-25	01-Aug-25		9:00 a.m.	4:00 p.m.	TBD	5	\$330.00 (No HST)	15
	SU25CW5D	Artist's Studio Combo With Fries	Lightly Seasoned Still Life and Piquant Portraits	Ages 11-14	Mon. - Fri.	28-Jul-25	01-Aug-25		9:00 a.m.	4:00 p.m.	TBD	5	\$330.00 (No HST)	15
	SU25CEX5A	Extended Care A.M.	Games, colouring and social activities	Ages 5-14	Mon. - Fri.	28-Jul-25	01-Aug-25		7:30 a.m.	9:00 a.m.	Counsellor on duty	5	\$60.00 (No HST)	15
	SU25CEX5B	Extended Care P.M.	Games, colouring and social activities	Ages 5-14	Mon. - Fri.	28-Jul-25	01-Aug-25		4:00 p.m.	5:30 p.m.	Counsellor on duty	5	\$60.00 (No HST)	15
Week 6	SU25CW6A	Tye Dye, Splatter, Pour	Colourful Creations Club	Ages 5-7	Tue. - Fri.	05-Aug-25	08-Aug-25	04-Aug-25	9:00 a.m.	4:00 p.m.	TBD	4	\$264.00 (No HST)	16
	SU25CW6B	Tye Dye, Splatter, Pour	We Solemnly Swear We Are Up To Great Art	Ages 7-9	Tue. - Fri.	05-Aug-25	08-Aug-25	04-Aug-25	9:00 a.m.	4:00 p.m.	TBD	4	\$264.00 (No HST)	16
	SU25CW6C	Tye Dye, Splatter, Pour	Artist Studio Spectacular	Ages 9-11	Tue. - Fri.	05-Aug-25	08-Aug-25	04-Aug-25	9:00 a.m.	4:00 p.m.	TBD	4	\$264.00 (No HST)	16
	SU25CW6D	Tye Dye, Splatter, Pour	Cool Gear and DIY Skills	Ages 11-14	Tue. - Fri.	05-Aug-25	08-Aug-25	04-Aug-25	9:00 a.m.	4:00 p.m.	TBD	4	\$264.00 (No HST)	16
	SU25CEX6A	Extended Care A.M.	Games, colouring and social activities	Ages 5-14	Tue. - Fri.	05-Aug-25	08-Aug-25	04-Aug-25	7:30 a.m.	9:00 a.m.	Counsellor on duty	4	\$48.00 (No HST)	16
	SU25CEX6B	Extended Care P.M.	Games, colouring and social activities	Ages 5-14	Tue. - Fri.	05-Aug-25	08-Aug-25	04-Aug-25	4:00 p.m.	5:30 p.m.	Counsellor on duty	4	\$48.00 (No HST)	16

SUMMER CAMP 2025 INDEX (CONTINUED)

All classes are located in-centre

Type	Course Code	Title	Session Name	Level (Ages)	Days	Start Date	End Date	No Class	Start Time	End Time	Instructor	Days	Total Fee	Pg.
Week 7	SU25CW7A	COOL CHARACTERS: Manga, 8Bit, Pixel, Semi Realism and More	Cute Creatures and Heroic Hybrids	Ages 5-7	Mon. - Fri.	11-Aug-25	15-Aug-25		9:00 a.m.	4:00 p.m.	TBD	5	\$330.00 (No HST)	17
	SU25CW7B	COOL CHARACTERS: Manga, 8Bit, Pixel, Semi Realism and More	Game On! Fantasy, Folklore and Fiction	Ages 7-9	Mon. - Fri.	11-Aug-25	15-Aug-25		9:00 a.m.	4:00 p.m.	TBD	5	\$330.00 (No HST)	17
	SU25CW7C	COOL CHARACTERS: Manga, 8Bit, Pixel, Semi Realism and More	Mini and MEGA Mash-Up	Ages 9-11	Mon. - Fri.	11-Aug-25	15-Aug-25		9:00 a.m.	4:00 p.m.	TBD	5	\$330.00 (No HST)	17
	SU25CW7D	COOL CHARACTERS: Manga, 8Bit, Pixel, Semi Realism and More	Mages, Titans and Other 'Slay' Characters	Ages 11-14	Mon. - Fri.	11-Aug-25	15-Aug-25		9:00 a.m.	4:00 p.m.	TBD	5	\$330.00 (No HST)	17
	SU25CEX7A	Extended Care A.M.	Games, colouring and social activities	Ages 5-14	Mon. - Fri.	11-Aug-25	15-Aug-25		7:30 a.m.	9:00 a.m.	Counsellor on duty	5	\$60.00 (No HST)	17
	SU25CEX7B	Extended Care P.M.	Games, colouring and social activities	Ages 5-14	Mon. - Fri.	11-Aug-25	15-Aug-25		4:00 p.m.	5:30 p.m.	Counsellor on duty	5	\$60.00 (No HST)	17
Week 8	SU25CW8A	Artists in Orbit	Cosmic Characters	Ages 5-7	Mon. - Fri.	18-Aug-25	22-Aug-25		9:00 a.m.	4:00 p.m.	TBD	5	\$330.00 (No HST)	18
	SU25CW8B	Artists in Orbit	Extraordinary Expeditions	Ages 7-9	Mon. - Fri.	18-Aug-25	22-Aug-25		9:00 a.m.	4:00 p.m.	TBD	5	\$330.00 (No HST)	18
	SU25CW8C	Artists in Orbit	Glittering Galaxies	Ages 9-11	Mon. - Fri.	18-Aug-25	22-Aug-25		9:00 a.m.	4:00 p.m.	TBD	5	\$330.00 (No HST)	18
	SU25CW8D	Artists in Orbit	Souvenirs From The Inky Black	Ages 11-14	Mon. - Fri.	18-Aug-25	22-Aug-25		9:00 a.m.	4:00 p.m.	TBD	5	\$330.00 (No HST)	18
	SU25CEX8A	Extended Care A.M.	Games, colouring and social activities	Ages 5-14	Mon. - Fri.	18-Aug-25	22-Aug-25		7:30 a.m.	9:00 a.m.	Counsellor on duty	5	\$60.00 (No HST)	18
	SU25CEX8B	Extended Care P.M.	Games, colouring and social activities	Ages 5-14	Mon. - Fri.	18-Aug-25	22-Aug-25		4:00 p.m.	5:30 p.m.	Counsellor on duty	5	\$60.00 (No HST)	18
Week 9	SU25CW9A	The Wonder of Nature	Prints, Patterns and Paws	Ages 5-7	Mon. - Fri.	25-Aug-25	29-Aug-25		9:00 a.m.	4:00 p.m.	TBD	5	\$330.00 (No HST)	19
	SU25CW9B	The Wonder of Nature	Scenes From A Secret Garden	Ages 7-9	Mon. - Fri.	25-Aug-25	29-Aug-25		9:00 a.m.	4:00 p.m.	TBD	5	\$330.00 (No HST)	19
	SU25CW9C	The Wonder of Nature	Wildlife of the World	Ages 9-11	Mon. - Fri.	25-Aug-25	29-Aug-25		9:00 a.m.	4:00 p.m.	TBD	5	\$330.00 (No HST)	19
	SU25CW9D	The Wonder of Nature	Mixed Media Animal Portraits and Landscape Art	Ages 11-14	Mon. - Fri.	25-Aug-25	29-Aug-25		9:00 a.m.	4:00 p.m.	TBD	5	\$330.00 (No HST)	19
	SU25CEX9A	Extended Care A.M.	Games, colouring and social activities	Ages 5-14	Mon. - Fri.	25-Aug-25	29-Aug-25		7:30 a.m.	9:00 a.m.	Counsellor on duty	5	\$60.00 (No HST)	19
	SU25CEX9B	Extended Care P.M.	Games, colouring and social activities	Ages 5-14	Mon. - Fri.	25-Aug-25	29-Aug-25		4:00 p.m.	5:30 p.m.	Counsellor on duty	5	\$60.00 (No HST)	19



Contact us to learn more about studio and gallery use.

Thank you to our funders and supporters:

Business/Arts

Ontario

Ontario Trillium Foundation
Fondation Trillium de l'Ontario
An agency of the Government of Ontario
Un organisme du gouvernement de l'Ontario

Toronto

ONTARIO ARTS COUNCIL
CONSEIL DES ARTS DE L'ONTARIO
an Ontario government agency
un organisme du gouvernement de l'Ontario

Canada



NEILSON PARK CREATIVE CENTRE:

56 Neilson Drive, Toronto (Etobicoke)

ON M9C 1V7

www.NeilsonParkCreativeCentre.com

info@neilsonparkcreativecentre.com

416.622.5294

Winter hours from September through June

Monday through Thursday: 9:00 a.m. - 9:30 p.m.

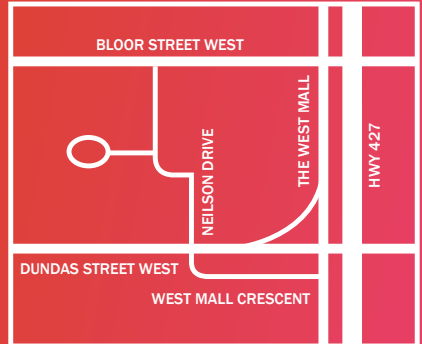
Friday through Sunday: 9:00 a.m. - 4:30 p.m.

Summer hours from July through August

Monday, Wednesday and Friday: 9:00 a.m. - 4:30 p.m.

Tuesday and Thursday: 9:00 a.m. - 9:30 p.m.

Closed Saturday and Sunday



Charitable registration # 13227 0703 RR0001

Follow us: @NPCCArts

